

COCO POT MACHINE

OPERATION MANUAL

1. Activation

1. Power supply
2. Control Panel

2. Pot Forming process

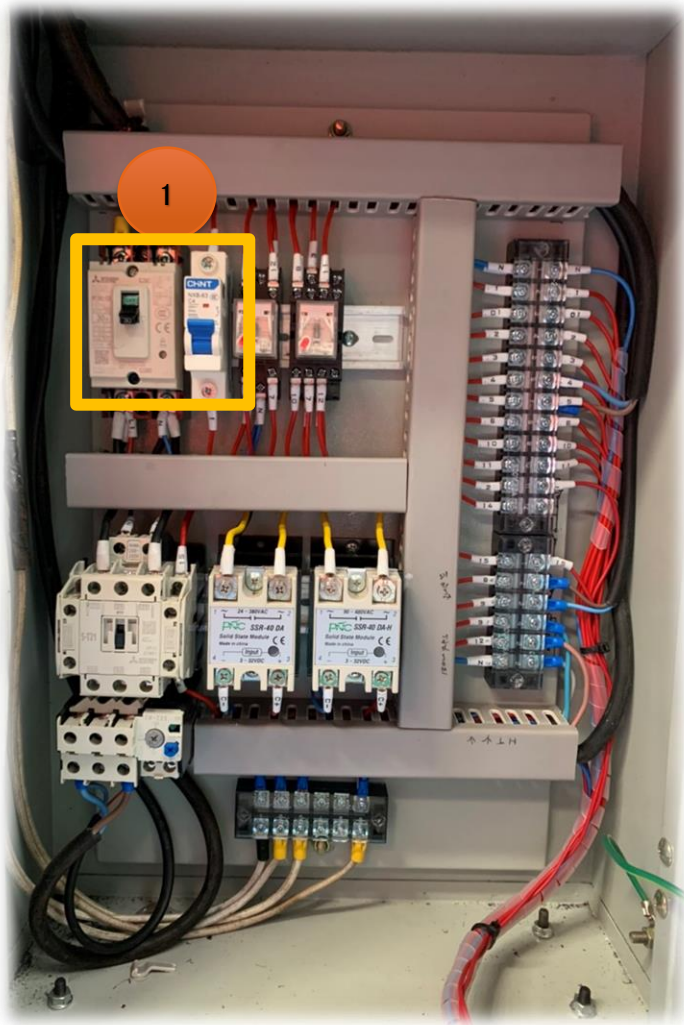
MACHINE ACTIVATION

- 1. POWER SUPPLY**
- 2. CONTROL PANEL**

1.) POWER SUPPLY

1. POWER

Activate both energy supply switches



2.) CONTROL PANEL

ACTIVATION STEPS

1. Activate Hydraulic engine

Switch: „A“

2. Activate Heater

Switch: „B“

! Wait for displays „a“ & „b“ reaching 130 to 150 degrees

3. Automation Grade

Switch: „C“

1. Manual

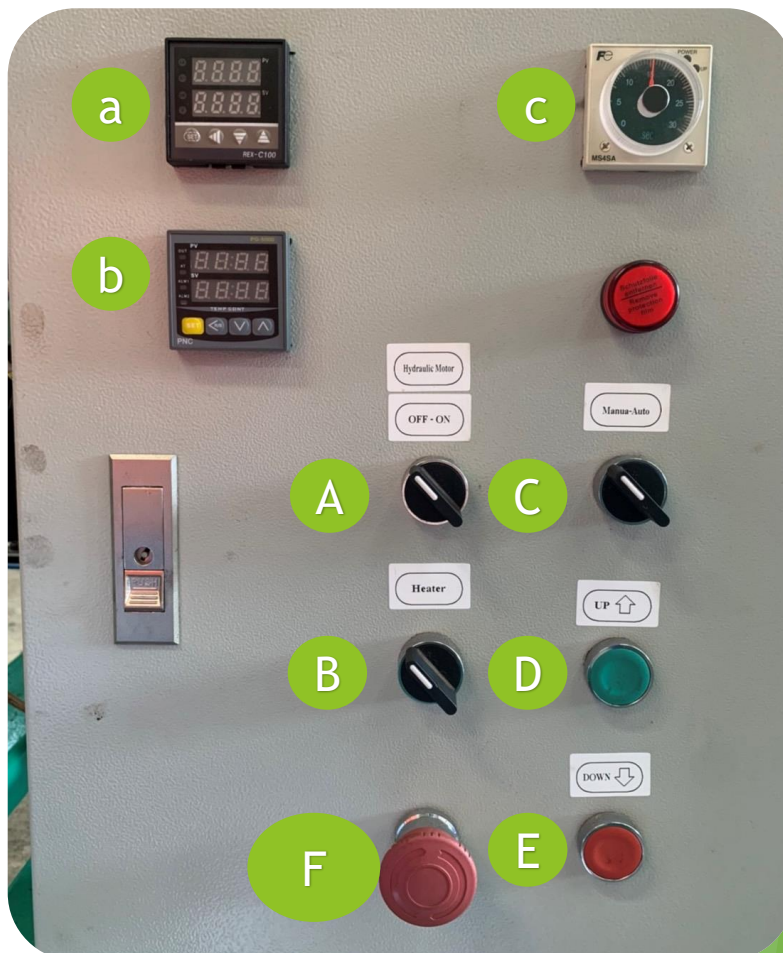
Use Button „D“ and „E“ to move mold up and down manually

2. Automated

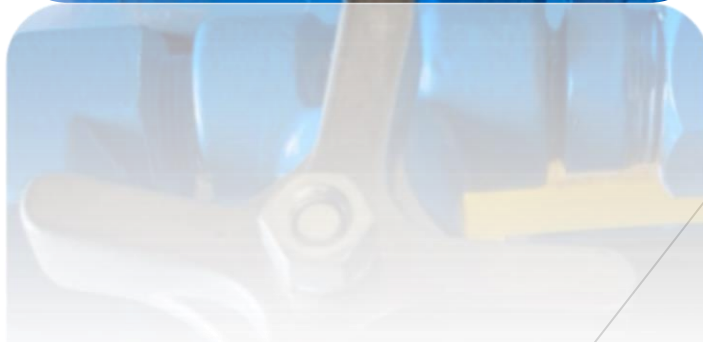
1. „c“ set time(in seconds) for mold up and down duration

4. Emergency Stop

Button: „F“



2.) PRESSURE GAUGE



MANUFACTURING PROCEDURE

2.) CREATION PROCESS

1. Prepare fibre based on mold size
2. Spray adhesive around the fibre
3. Put fibre into compression mold to form the shape (Press both buttons to initiate process)
4. Operate machine with Buttons described above
5. Cut off remaining fibre

1



2



3



4



5



Questions and answers Pot manufacturing machine

1. What is the difference between displays 'a' and 'b'?

A is the upper mold heat display, B is the lower mold heat display.

2. Can the operating temperature be changed to other values using one or both of these displays, or can the mold only be set to 130-150 °C?

Can adjust the temperature on the display screen

3. Can the press be used without the heater being switched on?

Yes it can

4. If the pressure gauge/display is something that can be easily added?

There is already a pressure gauge on the hydraulic pump.

5. Do the technical specifications of the hydraulic press mention that pressure the press exerts? This value is often known if a hydraulic press is bought off the shelf.

15 Tons

6. Are you using latex as the adhesive and if so, how much do you dilute the latex before spraying?

LATEX is 20% , Water is 80%

7. Have you tried pressing the coconut fibre without adding the latex (or other adhesive)? If so, what happens? Does it stick together or just fall apart?

If not using glue The pots will not stick together. We have tried with different types of glue. The best is LATEX and rubber glue.

8. Do you use any safety shields when operating the press?

We only use normal apron because the machine is not dangerous.